

# *ET-6000 series*

## Quick Start Manual

---



Version 1.11  
Mar. 2007

---

# Package checklist

The package includes the following items:

- One ET-6000 hardware module
- One Quick Start Manual
- One software utility CD
- One RS-232 download cable
- One screw driver

**Note:**

If any of these items are missed or damaged, contact the local distributors for more information. Save the shipping materials and cartons in case you want to ship in the future.

---

## Related documents and firmware

### Documents

User Manual: ET6000\_User\_Manual.pdf

Quick Start Manual: ET6000\_QuickStart\_Manual.pdf

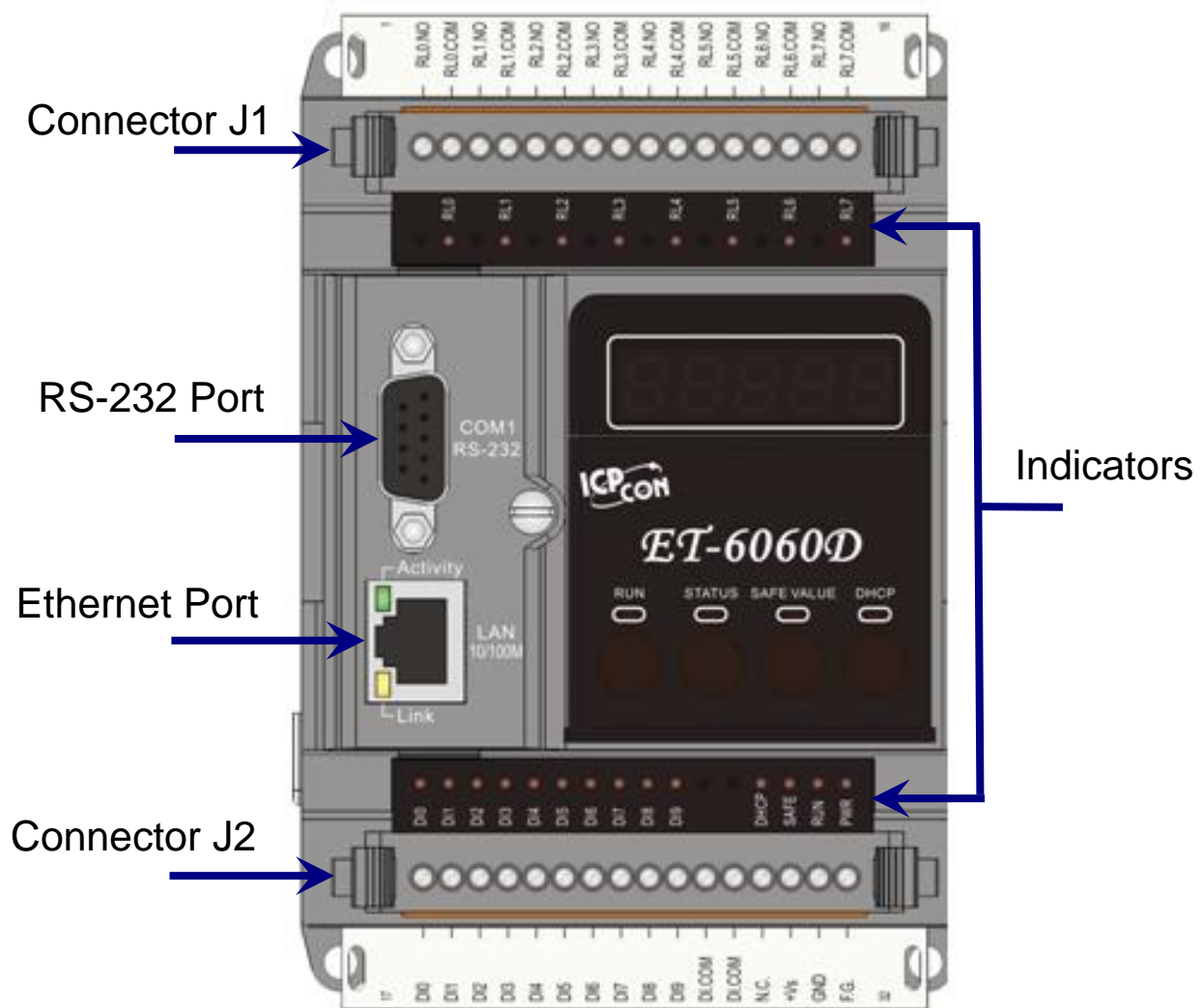
Location: CD: \NAPDOS\ET6000\Document

### Firmware:

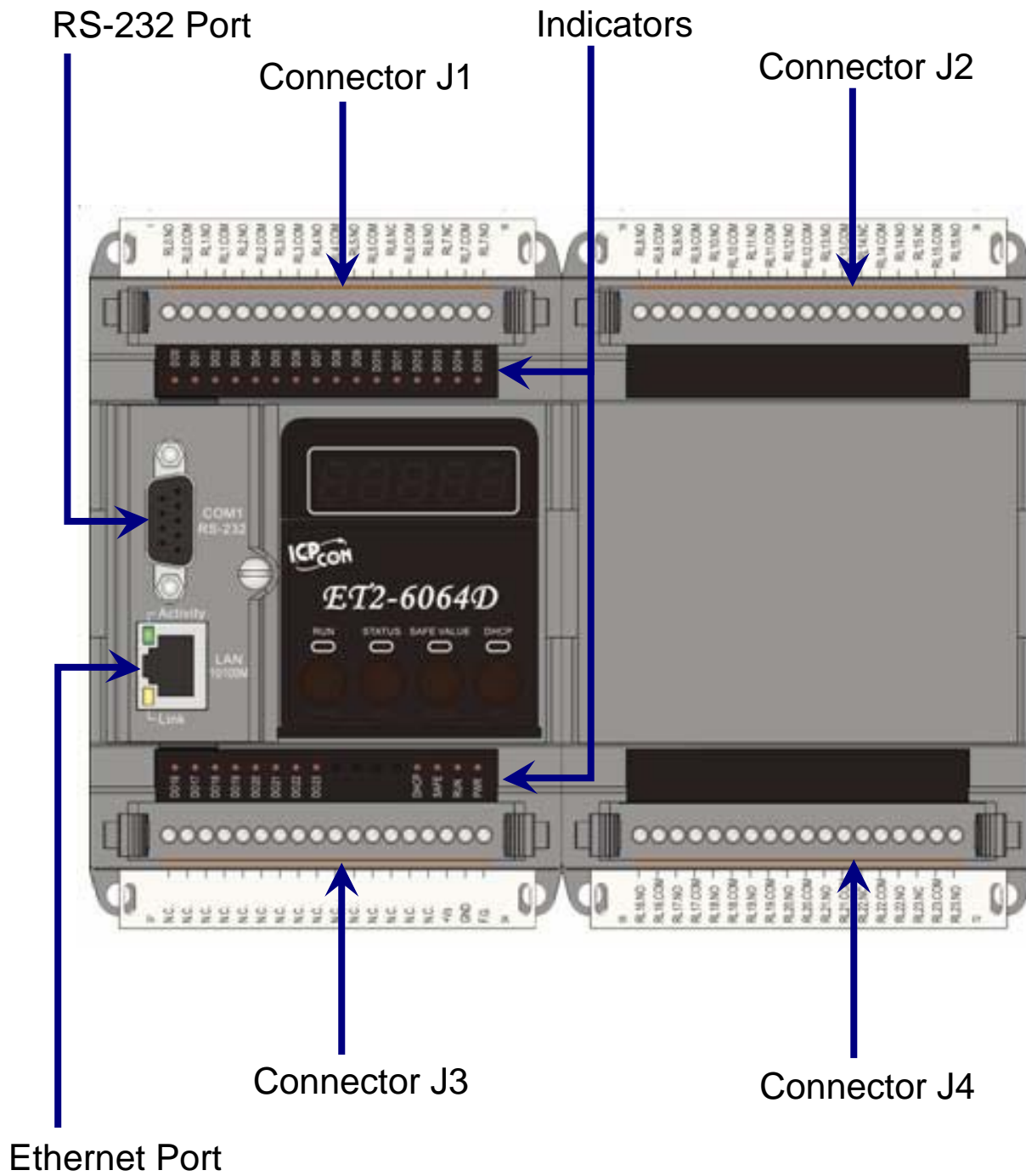
Location: CD: \NAPDOS\ET6000\Firmware

# 1. Preparation

## View of the 1 Unit Module

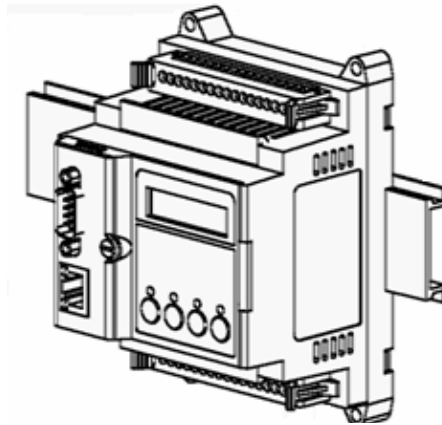


## View of the 2 Unit Module

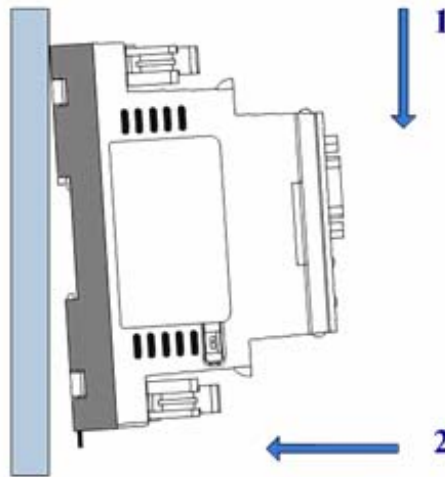


## Mounting the ET-6000

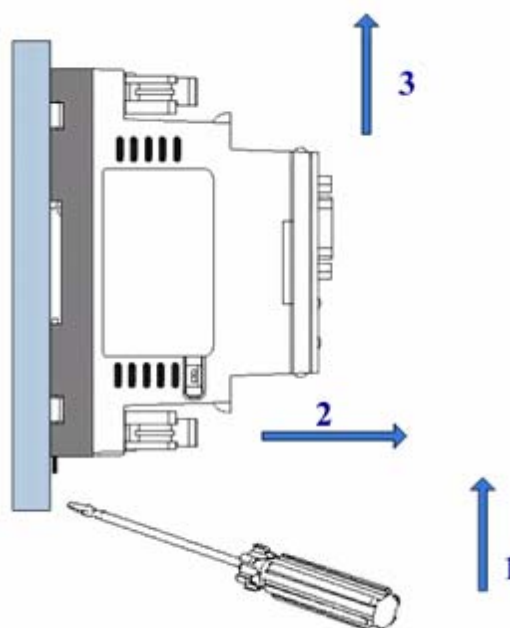
### Din-Rail Mounting (One Unit)



Snap the ET-6000 on to the DIN-rail

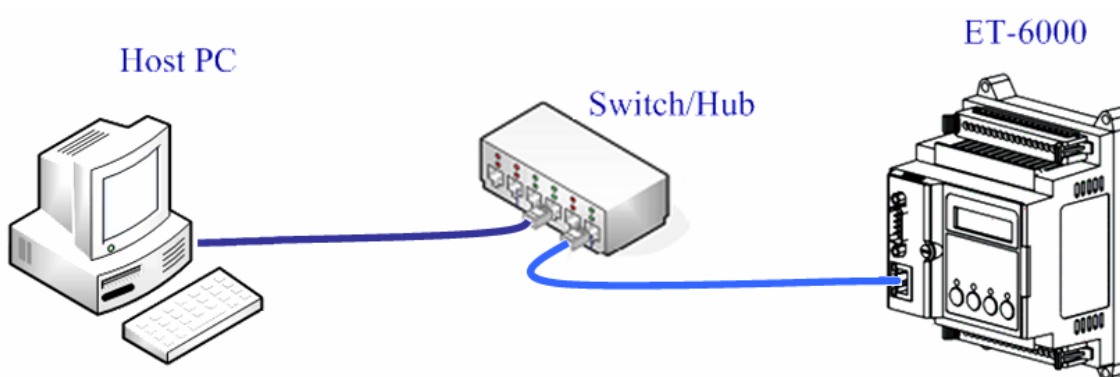
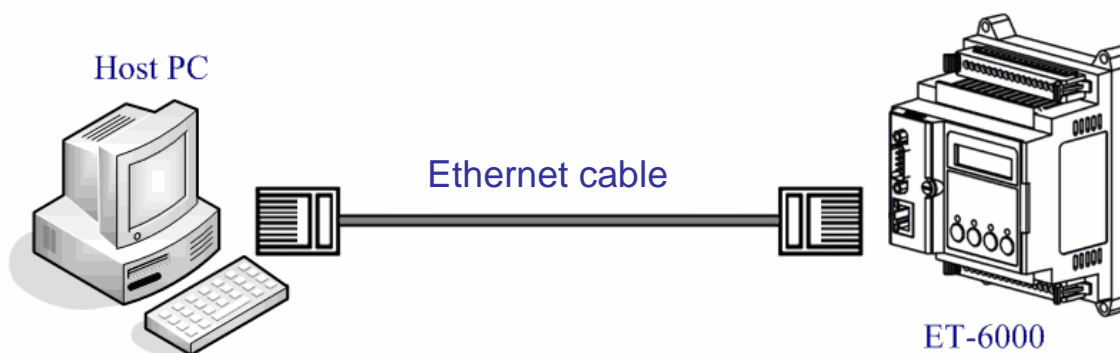


Snap the ET-6000 off from the DIN-rail



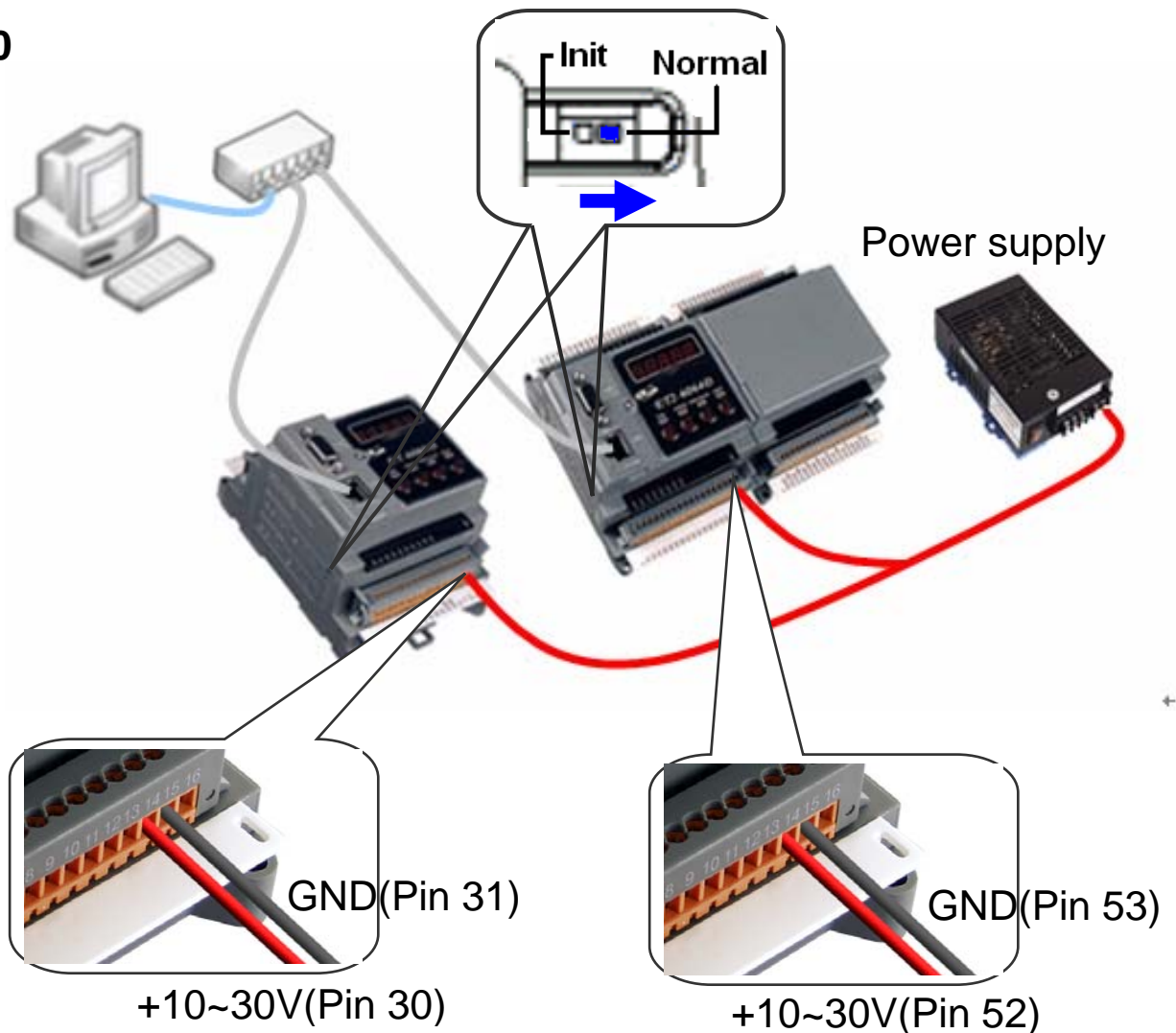
## Connecting the ET-6000 into the Ethernet

Link the ET-6000 and host PC direct or link the ET-6000 into the same Ethernet as host PC.



**Apply power  
to the  
ET-6000**

- 1. Check** Init/Normal switch is on **Normal** position.



- 2. Apply power** (+Vs, GND) to the ET-6000, +Vs can be range from +10V to +30V DC.
- 3. Check** that the 5-digit 7-SEG LED continuously shows the group ID information from 11111 to 44444.
- 4. Check** that the “RUN” LED periodically ON for 0.5 seconds and then OFF for 0.5 seconds.

## 2. Ethernet Configuration

Configuring the network settings correctly is the most important procedure prior to using ET-6000 controller. The following settings must be configured:

**Networking settings:** IP, Mask, and Gateway of ET-6000.

Item	Default
IP Address	192.168.255.1
Subnet Mask	255.255.0.0
Gateway	192.168.0.1

---

## Installing PCDiag

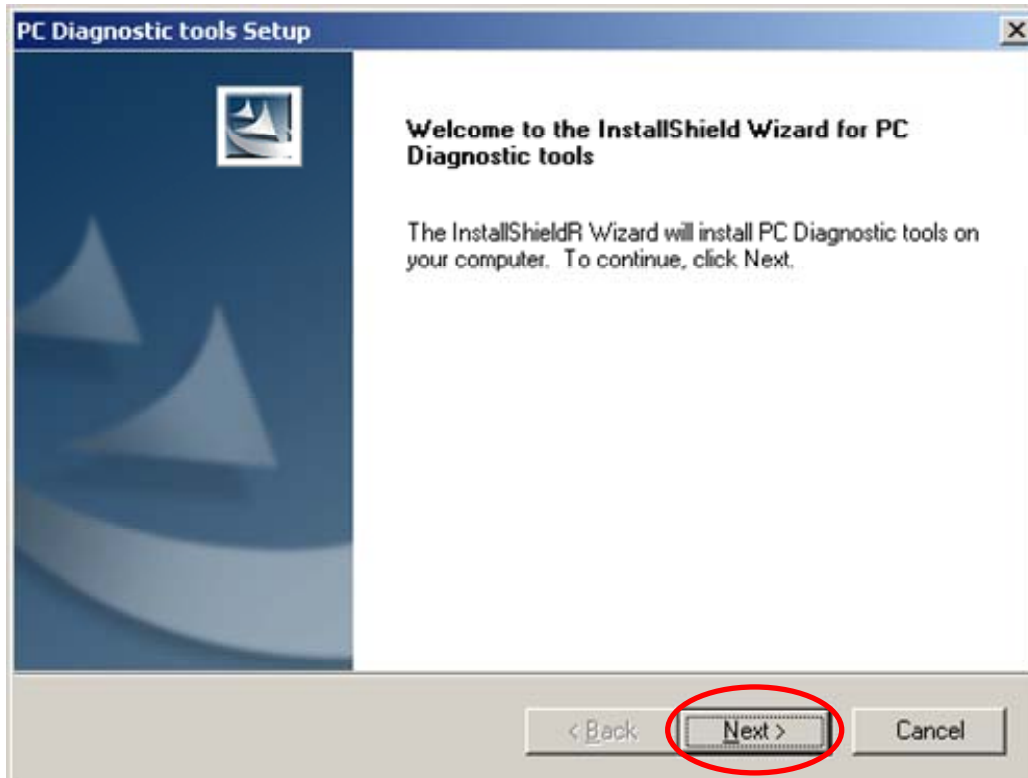
The PC Diagnostic tool is located on the shipment CD and FTP. The paths are

- *CD:\NAPDOS\ET6000\Tools\PCDiag\Setup\_2.0.5*
- *ftp://ftp.icpdas.com/pub/cd/6000cd/napdos/et6000/tools/pcdiag/setup\_2.0.5/*



Please follow the steps below:

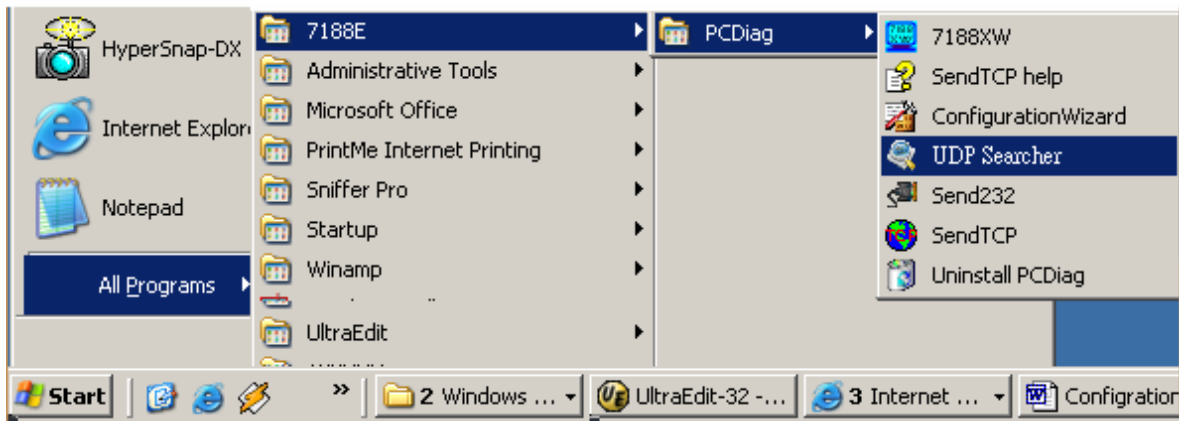
1. **Double Click** the “Setup.exe” to start installing.
2. **Click** on “Next” when the Welcome window opens.



3. **Click** on “Next” to install program files in the default directory, or select an alternative location by pressing “Browser...”.
4. **Select** the folder using in list of “Start Menu” >> “Program”>>, and then click on “Next” to continue
5. **Click** on “Next” to proceed with the installation.
6. **Click** on “Finish” to complete the installation.

## UDP Searcher -- Search the devices


1. Run the UDP Searcher on the PCDiag folder.

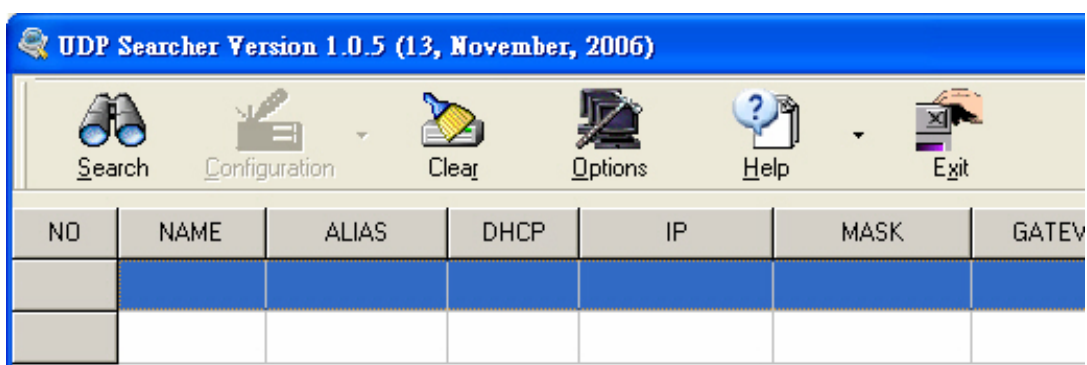


### Note:

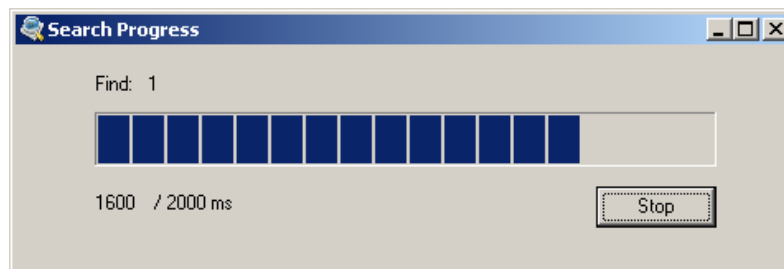
Before using this utility, ensure that you have connected the ET-6000 units installed on the same Ethernet network as the PC is connected to. Please refer to page 1-4 for Ethernet cable wiring.



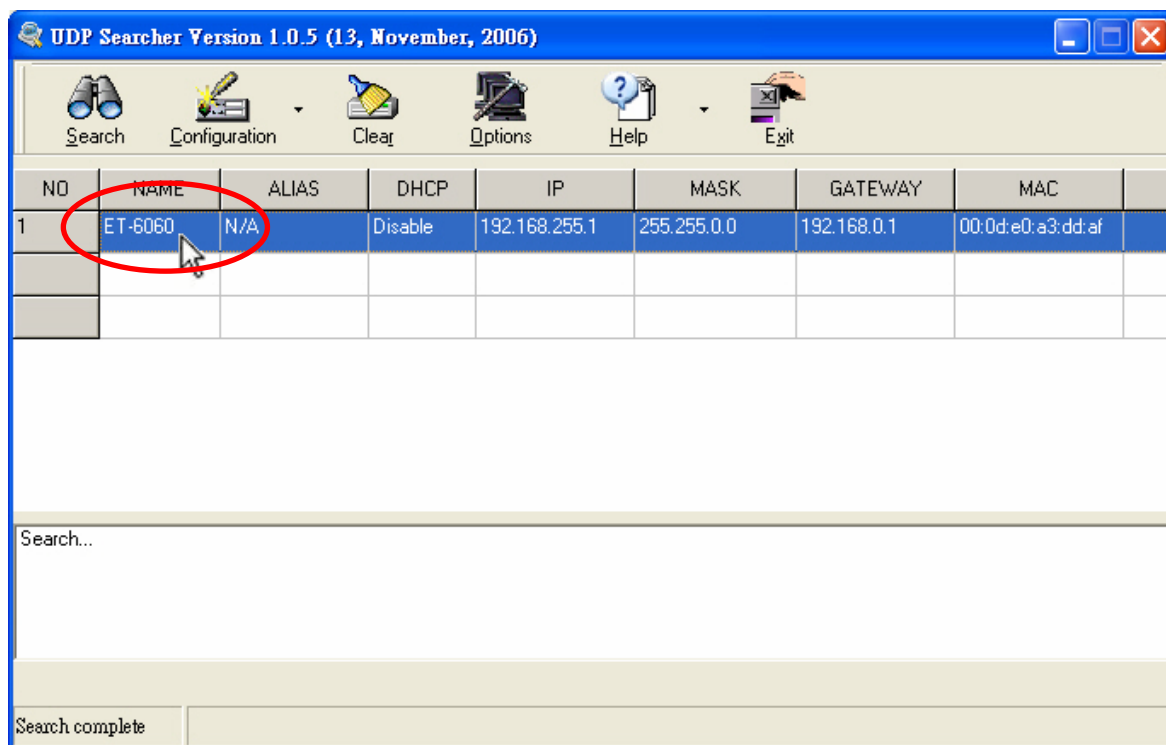
2. Click the  button to scan the ET-6000 modules on the Ethernet network.



The Search Progress window will appear and list the devices found until timeout or users click the Stop button.

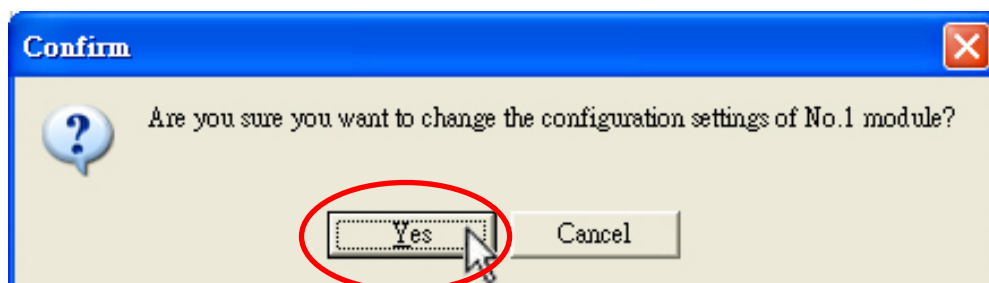
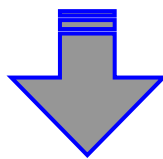
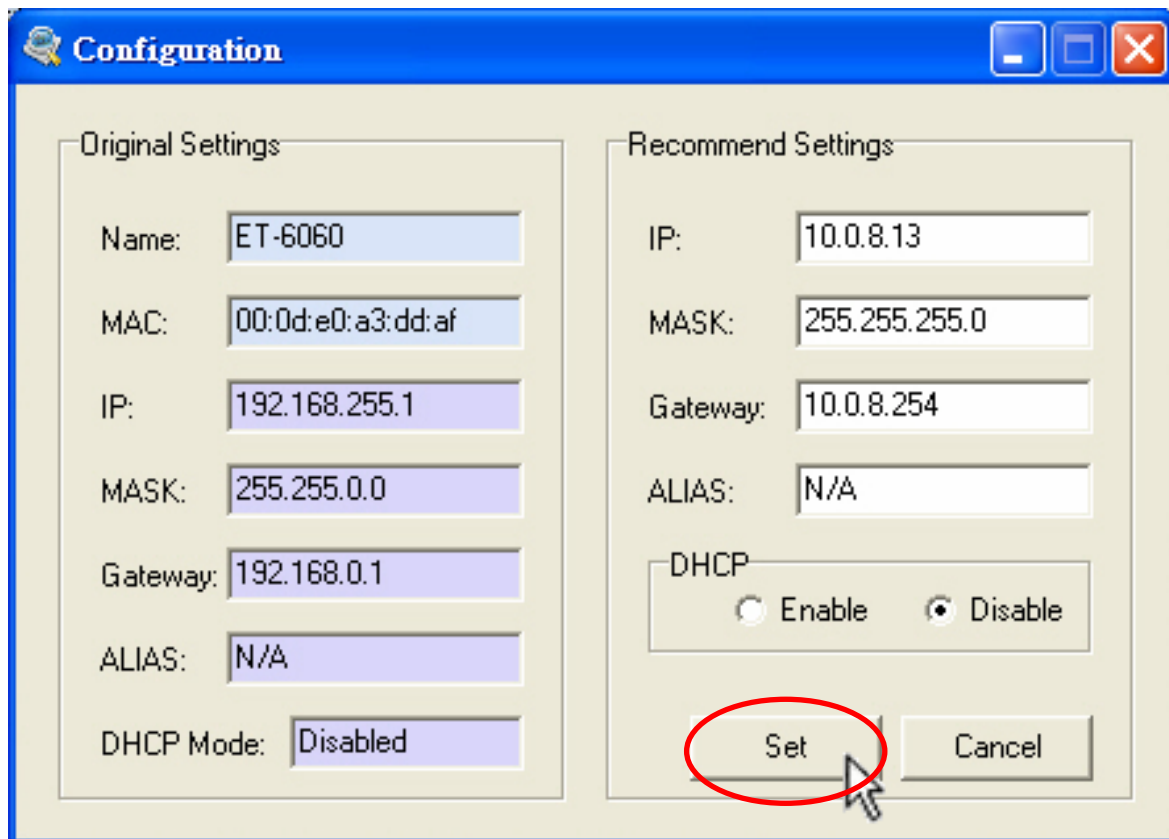


3. **Double-click** the device item to configure IP settings.



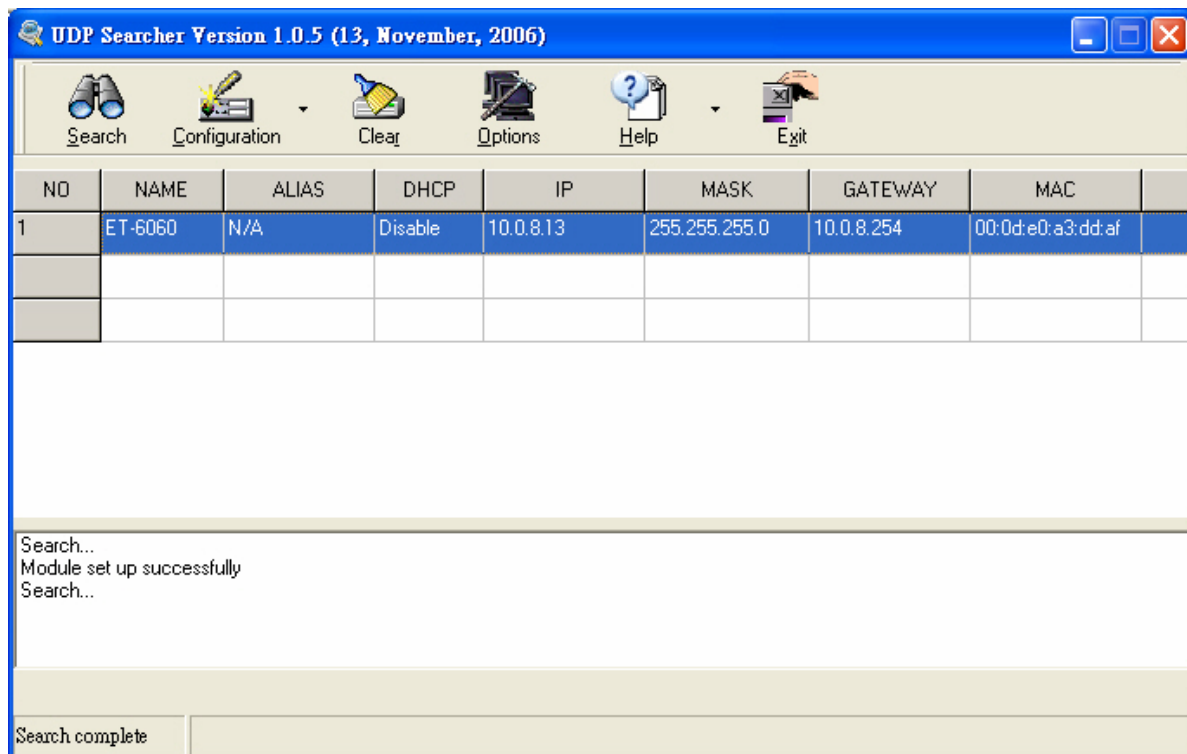
**4. Press the “Set” button to use the “Recommend Settings”.**

Or change the IP/ Mask/ Gateway address and Alias name in the “Recommend Settings” partition, then press the “Set” button to take effect of the settings.



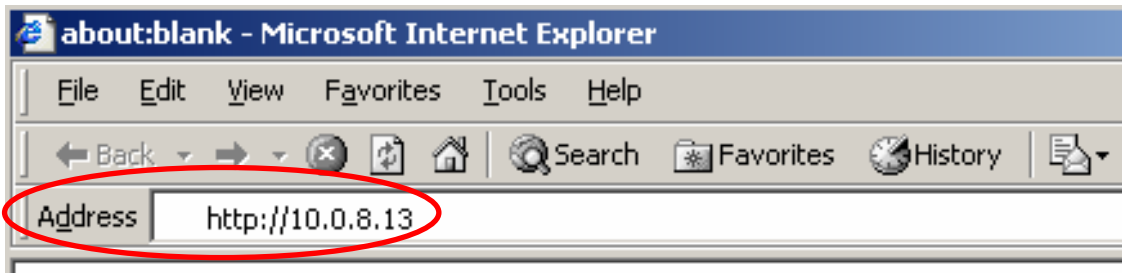
Click the “Yes” button will cause the ET-6000 to reboot to make the settings effectively.

5. **Search** again to check whether the settings have been changed or not.



### 3. Connect the ET-6000 -- by web browser

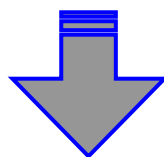
1. **Start up** the web browser (Internet Explorer, Mozilla or Firefox), input the URL address of the ET-6000 (such as <http://10.0.8.13>) and then press “Enter” key to link the ET-6000.



2. **Input** the User name and Password.

#### Web page Configuration

Item	Default
User name	Admin (Case sensitive)
Password	Admin (Case sensitive)



ET6000 Web page - Microsoft Internet Explorer

File Edit View Favorites Tools Help

Back Forward Stop Search Favorites

Address <http://10.0.8.13/> Go Links

**ICP DAS**  
<http://www.icpdas.com>

**Main Menu**

- Overview
- Configuration**
- Authentication
- Web HMI
- Pair Connection
- More Information

**Welcome to ET6000 WWW page !**

Model Name	ET6052
MAC Address	0:d:e0:a3:dd:af
Module Information	abcc
Firmware Version	V102
OS Version	V202

DI channel	10
DO channel	8
AI channel	0
AO channel	0

**General Description**

SCADA IPC/PC TCP/IP Ethernet Web Browser PAC

Time 18:32:55 Internet

The brief description of the Web page configuration function is listed on six main functions of the tree structure.